

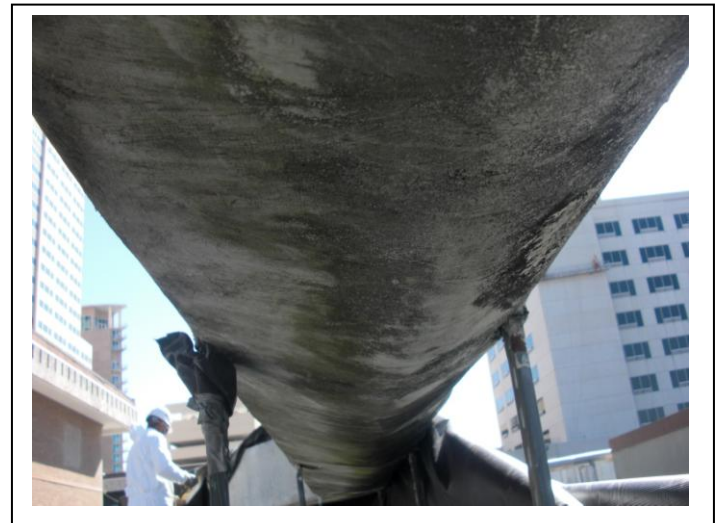
HR Duct and AHU Corrective Efforts

Performed September 2010

Conditions

- Duct insulation was falling off as result of condensation moisture saturation
- Portions of the duct were rusting from the moisture saturation
- Several leaks were found in duct line
- AHU internally was in need of cleaning

Duct prior to work



Bottom of duct has insulation that is belled out with water



Moisture has broken through seal layer



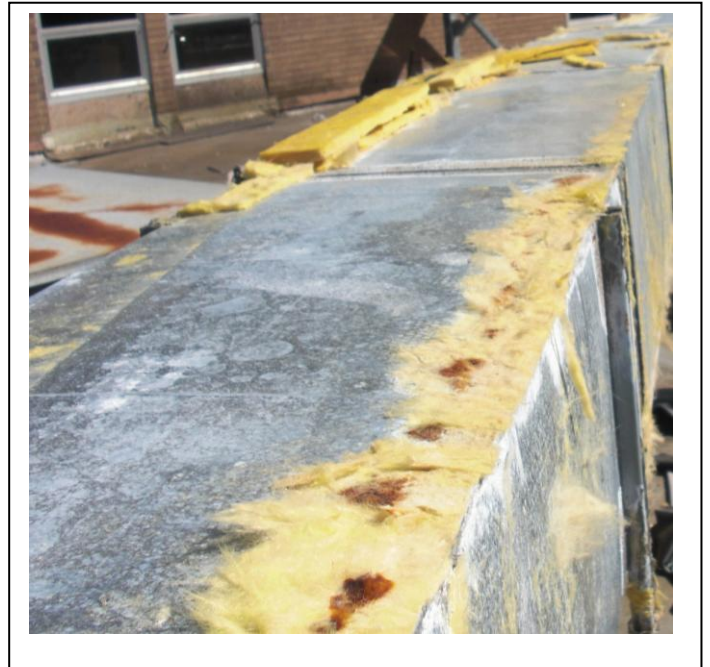
Wet insulation at unit discharge

Uncovered bottom of duct



Heavy condensation droplets

Effects of condensation



Cleaning the surfaces



ThermaCote® Applied



Eliminates condensation and stops corrosion

Inside the unit

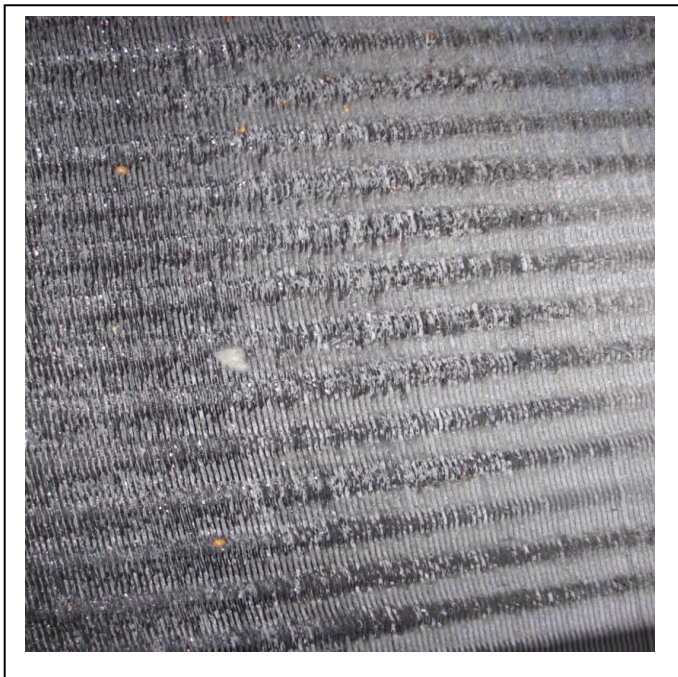
Before



After



Before



After



Finished ThermaCote® Application



Temperature difference



12" Apart
Coated vs.
Uncoated
Roof
Surface

57°
Difference

